

320

SEC. 2, T11N, R3W

310

POB & ASSOCIATES, OKLAHOMA CITY, OK.						
FED. DIST. NO.	ROAD NO.	STATE	JOB PIECE NO.	FISCAL YEAR	SHEET NO.	TOTAL SHEETS
6		OKLA.				
DESCRIPTION		REVISIONS		DATE		

CAUTION:  
OVERHEAD ELECTRIC  
LINES CROSSING

**LINE 4**  
PI STA. 372+36.79  
N: 168848.5754  
E: 2122494.2154  
Δ = 2°54'33.75" LT.

362+00

S89°07'47.32"W  
LINE 4

N89°07'47.34"W  
Line 2

N87°57'38.93"E  
LINE 4

MEET & MATCH  
EXISTING PVMT.

Line 1 S83°29'12.63"W

P.O.E. STA. 374+74.70 ~ LINE 4

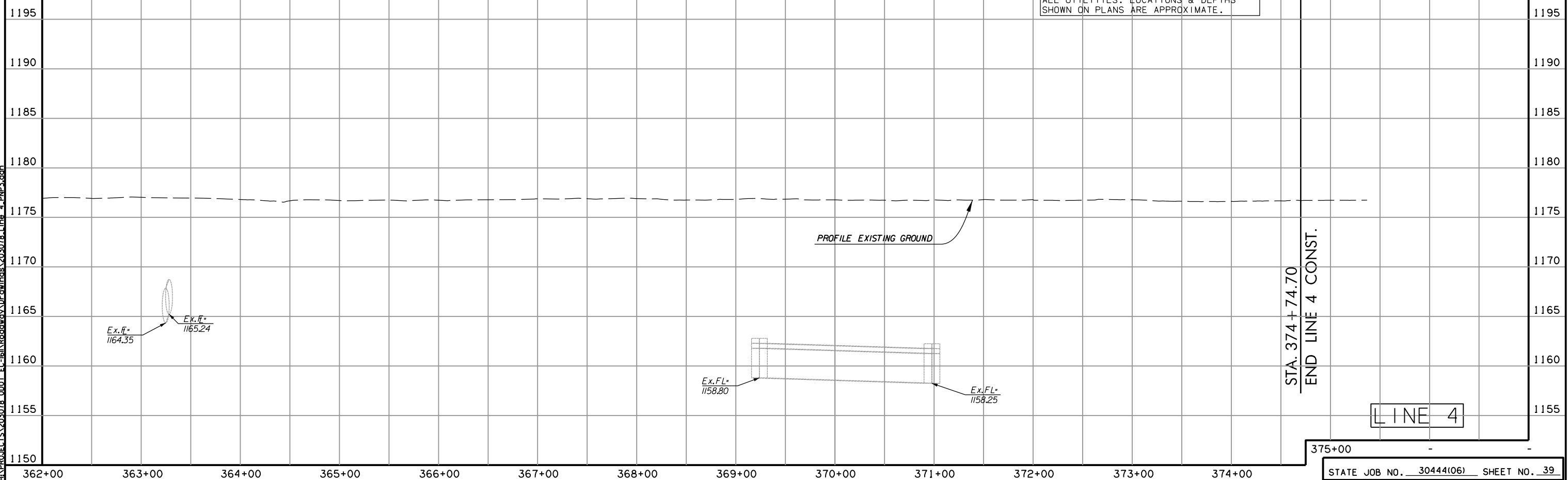
P.T. STA. 308+57.54 ~ Ex. Line 2

STA. 368+85.00 TO  
STA. 369+65.00  
CONSTRUCT CONCRETE  
LONGITUDINAL BARRIER  
DESIGN 1

STA. 355+00.00 TO  
STA. 365+00.00  
CONSTRUCT CONCRETE  
LONGITUDINAL BARRIER

RIPRAP W/ FILTER  
BLANKET=4,605 TONS

CAUTION:  
CONTRACTORS SHALL VERIFY LOCATIONS OF  
ALL UTILITIES. LOCATIONS & DEPTHS  
SHOWN ON PLANS ARE APPROXIMATE.



LINE 4

STA. 374 + 74.70  
END LINE 4 CONST.

375+00

STATE JOB NO. 30444(06) SHEET NO. 39

OKLAHOMA COUNTY

8/31/2017 2:33:29 PM H:\PROJECTS\203078\_0001\_EC-IB\Roadway\Drawings\203078\_Line\_4\_PMP3.dwg